

*“The true measure of any society can be found in how it treats its most vulnerable members.”*

*-Mahatma Ghandi*



# REACH Beyond

A Transformational Campaign  
for Las Trampas



# REACH Beyond

*Please join us as we:*

*R*enew

our commitment to delivering innovative programs every day.

*E*mpower

individuals to make independent decisions and choices about their lives.

*A*chieve

through technology and a purpose-designed new facility, a more vibrant and multi-faceted learning environment.

*C*onnect

with the broader community through work, recreation and daily life.

*H*onor

the people we serve and their families by enriching their lives and expanding opportunities.

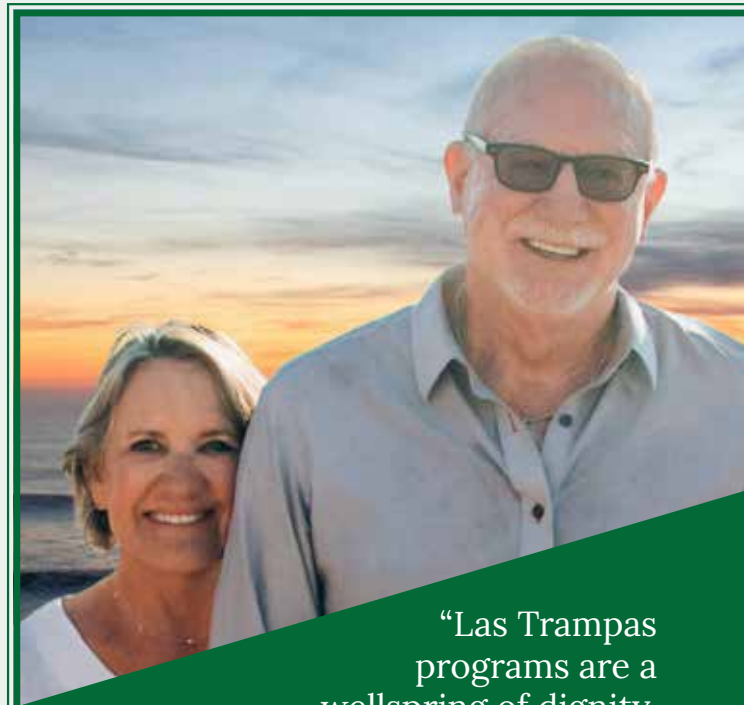
# Staying True to Our Mission

Las Trampas meets an urgent need in Contra Costa County with a deeply compassionate response: We provide housing and individualized services for adults with moderate to severe effects of intellectual and developmental disabilities. Your generous support makes this possible.

Our philosophy is that all persons with developmental disabilities are entitled to develop their optimum state of social, physical, and mental well-being, and to share an integrated lifestyle similar to what non-disabled persons enjoy.

## **This philosophy is based on the following convictions:**

- **All people**, regardless of their individual challenges, ethnicity, or socioeconomic situation are equally valued and respected.
- **All people** have the right to make choices about their personal values and lifestyle.
- **All people** should have meaningful learning opportunities that are applicable to their lives.
- **All people** have the right to live as self-sufficiently as possible.
- **All people** should be provided with understandable and relevant information that provides the opportunity to make decisions, give input, and advocate for or against changes in their lives.
- **Las Trampas** will make every effort to provide a lifetime of residential programs and services for individuals we serve.



“Las Trampas programs are a wellspring of dignity, companionship & self-determination.”  
*Connie & Michael Collier, Campaign Co-Chairs*

Since opening our doors in 1958, the number of people needing Las Trampas' services has soared, and their needs have multiplied. At the same time, government funds have steadily dwindled and no longer meet basic needs, much less provide for innovative programs and facilities that allow for the deep and sustained transformation and growth

that we know to be possible. While Las Trampas continues to provide services with a commitment to excellence, our main campus (located on Lana Lane in Lafayette) is now **only barely up to the task**.



**To stay true to our mission** of serving those most in need within a nurturing physical space, Las Trampas has launched plans to refresh, renovate, and rebuild our original campus. The new facility, designed with the safety, health, and specific needs of our participants as the highest priority, will take our campus from one that reflects a 1960s aesthetic and, frankly, our society's then-limited

understanding of how best to serve those with intellectual and developmental disabilities (IDD), to one that is a model for the 21st century and, most importantly, worthy of its purpose, our participants, and your support.

**We are heartened** that so many members of our community have already given tremendous financial support. Our dream of a beautiful and highly functional campus is clearly within reach. But it's going to take a deep and meaningful commitment from everyone who cares about the participants we serve in order to make this transformation possible. Please join our family of supporters and help the most vulnerable among us live with respect, care, and joy.



# Engaging & Life Changing Opportunities

Of course, Las Trampas is more than a bricks and mortar building. Las Trampas is a community within a community. Participants and families at Las Trampas grow, learn, and connect through their engagement with the following services:

- The Las Trampas **Adult Development Program**, a licensed adult day program, serves individuals with a wide range of needs, interests, and abilities. We offer both community and classroom-based activities, so that individuals' needs are met as they develop social skills through academics, vocational opportunities, and activities of daily living.
- Las Trampas's **Adult Residential Model** provides licensed residences and services to assist individuals with moderate to severe behavioral concerns with living in the community in a home setting. This support includes 24-hour staffing.
- Individuals in the **Supported and Independent Living Services Program** work with staff to live independently in their own homes while receiving necessary personalized support. Independent Living Services provides training and tools for everyday living for individuals who are able to live on their own with minimal supports.

**Las Trampas strives to serve participants who have ever-greater needs... and our new building will make it so.**

## *Michael: A Success Story*

Our son Michael was born visually impaired and with a seizure condition. Mike first started at Las Trampas six years ago. Since then, the staff has worked collaboratively with us, incorporating Mike's wants and needs into his program.

Mike is very friendly and outgoing, and the Las Trampas program has been very good for him. He has made new friends and even met his girlfriend Amy, who is also a participant at Las Trampas. Mike's day program has become such a big part of his life that we must check with him before planning vacations!

At Las Trampas, Mike has a daily routine, social connections, the opportunity to perform meaningful work, and integration into the community. Las Trampas knows that one-size programming does not fit all participants. They treat everyone as an important individual, looking out for each person's needs and what is best for them. They recognize differences and accommodate each participant.

We wish to thank all the warm and talented staff at Las Trampas for providing a safe and encouraging environment. We feel that we really work well as a team, meeting Mike's needs together.

*- Joe and Deb De Trane*





## *Las Trampas: Up to the Challenge*

At Las Trampas, we don't look away. We truly "see" our participants and are proud of our ability to meet them right where they are. People living with IDD include those with intellectual disabilities, cerebral palsy, seizure disorders, autism, and other conditions that impact the individual's ability to function independently. This impact can be mild, moderate, or profound. People with moderate to profound effects of intellectual and developmental disabilities have even greater needs for health care, mobility, and behavioral support.

Most organizations that serve individuals with intellectual and developmental disabilities choose to care for the most capable, mildly impacted individuals. Las Trampas, in contrast, focuses its attention on those with severe and moderate impacts.





Moreover, as people diagnosed with autism during the 1990s transition to adult services, those services are being stressed even further. Our new facility and programs must address the needs of adults with autism as well as all others spanning the full range of intellectual and developmental disabilities.

As part of our physical transformation, Las Trampas is preparing for the future by incorporating the most current, effective, and evidence-based methodologies into our adult day programs while designing a new facility that will dramatically improve the effectiveness with which we serve our participants.





## Our Vision for a New Facility

Our vision for a new facility is deeply informed by our understanding of the profound needs of our participants and their families. We know that:

- Individuals with developmental disabilities are living longer and aging faster, which results in greater health and financial hardships.
- Their families face inestimable challenges over a lifetime.
- A wave of autism is washing over our communities and impacting our family members, our friends and neighbors. Even our schools are struggling under the pressure.
- The fastest growing segment of the disabilities demographic is those with autism and subsequent behavioral challenges.
- After age 22, their support systems disappear.



**It is imperative that Las Trampas provide excellent programs and an appropriate physical environment for our participants and their families. Together, we can help them to navigate the many challenges they face with the support and resources they need and deserve.**

**We cannot allow this vulnerable population to disappear from the fabric of our community and the broader social conscience.**



It is the vision of Las Trampas to provide the highest quality services and to be the program of choice for those who are moderately to profoundly impacted by intellectual and developmental disabilities in Contra Costa County.

In keeping with this vision, Las Trampas plans to replace the existing facilities — constructed in 1968 — with a new facility that will give participants opportunities to practice and utilize skills in real-world community settings.



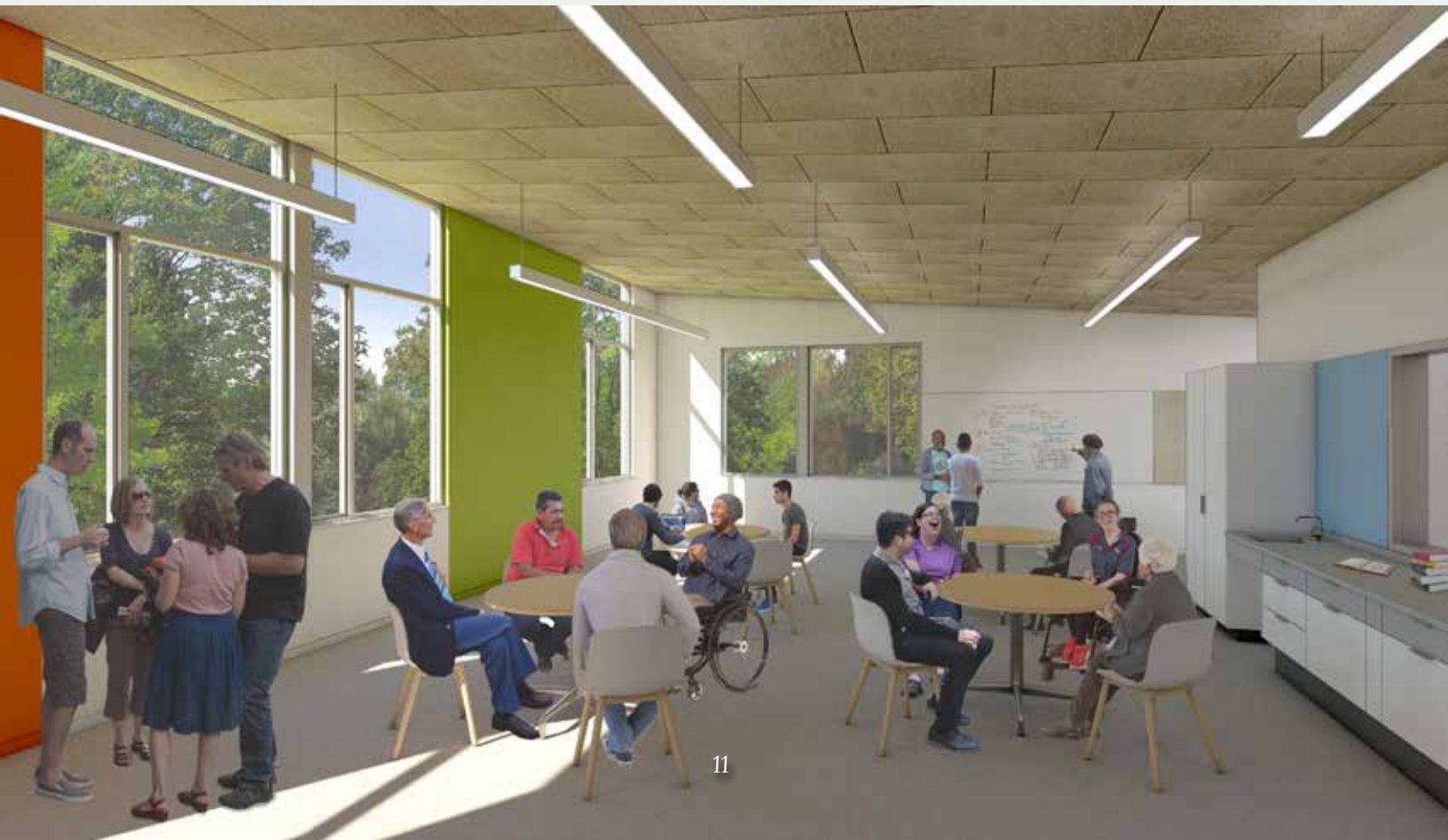
We are engaged with experts in architecture, intellectual and developmental disabilities, and autism to design a new facility that is bright, attractive, functional, and welcoming to both participants and members of the community at large. In short, the new facility will be light years away from the warehouse-type institutions of the past.

The new facility will incorporate large, open, flexible spaces that can be easily converted according to group and individual needs. The open plan accommodates the needs of persons with physical disabilities and allows us to incorporate specialized equipment and furnishings. Large spaces can accommodate modular work areas that minimize distraction and may be removed when not needed. This concept also allows for revisions in programming that may come in the future.



## *Additional Features Include:*

- **Design with autism in mind**, to promote the success of people with autism by respecting their sensory needs around acoustics, lighting, sensory zoning, “escape” space, and transition space
- **Technology for modern times** to support the people we serve, including state-of-the-art devices and equipment to assist individuals with personal hygiene, communication, and learning
- **Specialized areas for specific activities** as part of a structured teaching environment consistent with new standards applied to adults on the autism spectrum
- **Structured environments** to help people with autism and intellectual disabilities by creating routine and allowing for independent navigation of all parts of the classroom/facility and self-directed activities



## *Additional Features* (continued...)

- **Accessibility features** including push-button and automatic doorways, widened halls, handrails in hallways for visually impaired people and those with an unsteady gait, large single-user restrooms, changing rooms with hydraulic changing tables and accessible shower stalls for those who may require bathing, elevator to the second floor, widened walkways, ADA compliant ramps and stairwells
- **Critical safety features** such as a new fire alarm system, keyless code entry to areas containing confidential information, an anti-theft alarm system, alarmed gates for areas where individuals at risk of wandering (dementia and autism) will receive services, and tempered glass windows
- **Reinforced walls** and/or wainscoting, tempered glass windows, and locked storage areas to prevent damage and injury to oneself or others and to ensure we are serving individuals who may have significant property destruction behaviors



An architectural rendering of a modern, two-story community building with a flat roof and large windows. The building features a mix of grey, white, and brown panels. In the foreground, a large group of diverse people are sitting at tables in an outdoor courtyard, engaged in conversation. A person in a wheelchair is also visible. The building is surrounded by lush green trees and a grassy field in the foreground. The sky is blue with some light clouds.

# *Changing Lives, Creating Opportunities, Building Community*

This new facility will enhance the lives of the people we serve, the stellar team that serves them, and the broader community.

We are reimagining a campus that knits together a dynamic community hub — a place that allows for flexible, innovative, and people-centered interactions.

The building will be more than a structure; it will advance our ability to integrate new directions in learning, increase space and accessibility, and support a skills-focused curriculum that enables participants to become more engaged members of the community.

**Las Trampas asks you to join with us in answering  
the call to care for those individuals most often  
overlooked and undervalued.**

With a total project cost of \$12,500,000 to construct and equip our new facility, we are seeking funds from multiple sources. In addition to utilizing our own resources, we have received encouraging and tremendously generous support from several major foundations and many generous individuals. In fact, we are so close to our fundraising goal that success is virtually guaranteed. But we can't stop just yet.

***We need your generous support to make this dream come true.***

Our deepest belief at Las Trampas is that people living with intellectual and developmental disabilities deserve to live a life that nourishes their souls and allows them to fulfill their greatest potential.

As a campaign contributor, you will help Las Trampas REACH Beyond the challenges created by an outdated, constricted facility and strengthen our capacity to serve our participants with a modern campus worthy of them and of our community.

Please join us in building a future that embraces everyone's unique contributions, supports and celebrates each person's right to develop their own capabilities and personal relationships, and strengthens the community fabric that supports us all. We wholeheartedly invite you to join us in giving as generously as you can.





*Daniel L. Hogue, M.S.*  
*Executive Director*

*“Las Trampas is at the threshold of change toward full inclusion of people with intellectual and developmental disabilities. We have accepted this challenge with vigor and this is the work we do every day – to break down the barriers that hold people back – the physical barriers, vocational barriers, attitudinal barriers, legislative barriers – to seek a community where affordable and accessible housing is available, to seek a world where people with disabilities are regarded as a valuable asset to the community, not seen for what they are not able to do.”*



3460 Lana Lane  
Lafayette, CA 94549  
925.284.1462